

2002 Q3

3. What is the smallest possible average of four distinct positive even integers?
- (A) 3 (B) 4 (C) 5 (D) 6 (E) 7

2 / 8

2016 Q3

3. Four students take an exam. Three of their scores are 70, 80, and 90. If the average of their four scores is 70, then what is the remaining score?
- (A) 40 (B) 50 (C) 55 (D) 60 (E) 70

3 / 8

2010 Q4

4. What is the sum of the mean, median, and mode of the numbers 2, 3, 0, 3, 1, 4, 0, 3?
- (A) 6.5 (B) 7 (C) 7.5 (D) 8.5 (E) 9

4 / 8

2011 Q4

4. Here is a list of the numbers of fish that Tyler caught in nine outings last summer:

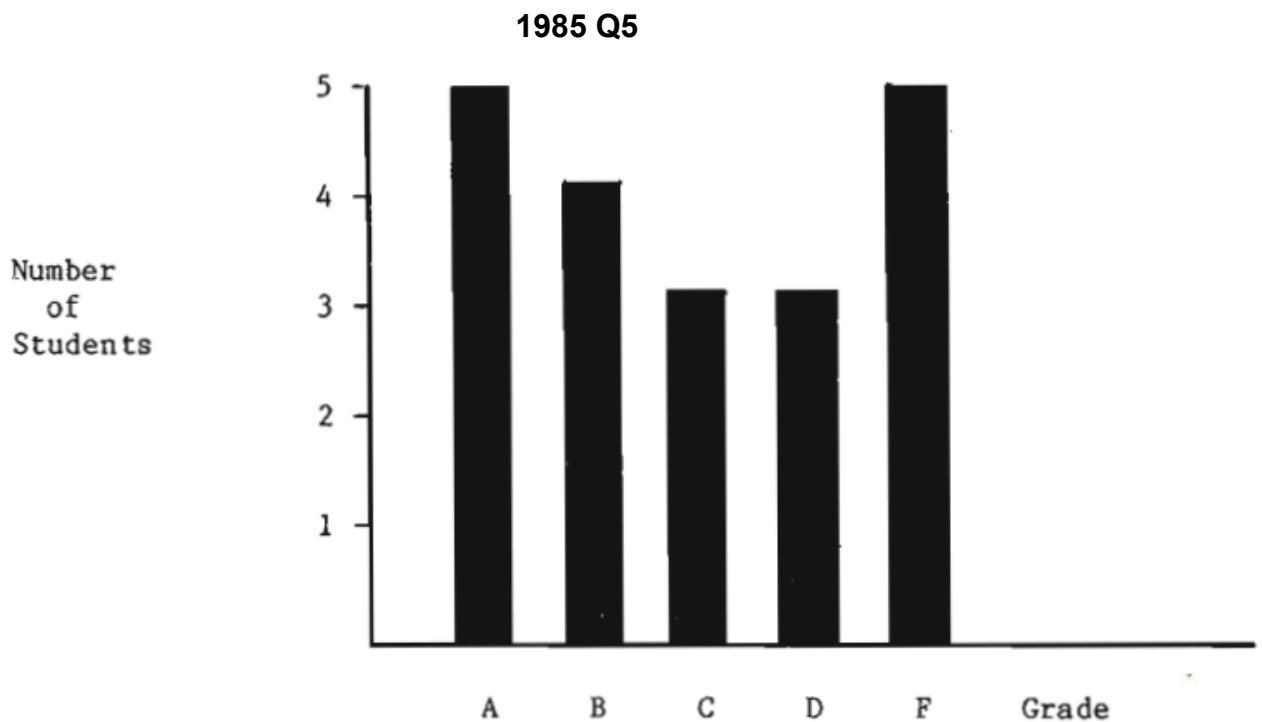
2, 0, 1, 3, 0, 3, 3, 1, 2.

Which statement about the mean, mode, and median of these numbers is true?

- (A) median < mean < mode (B) mean < mode < median
 (C) mean < median < mode (D) median < mode < mean
 (E) mode < median < mean

5 / 8

5.



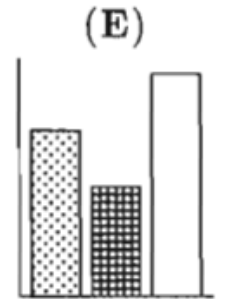
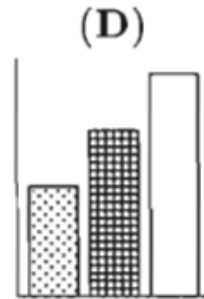
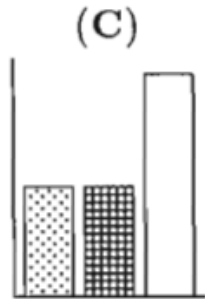
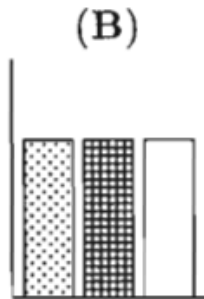
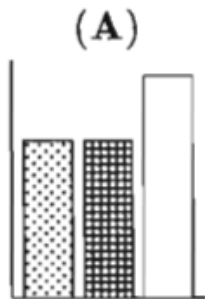
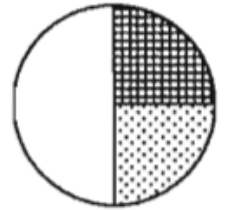
The bar graph shows the grades in a mathematics class for the last grading period. If A, B, C and D are satisfactory grades, what fraction of the grades shown in the graph are satisfactory?

- A) $\frac{1}{2}$ B) $\frac{2}{3}$ C) $\frac{3}{4}$ D) $\frac{4}{5}$ E) $\frac{9}{10}$

6 / 8

1993 Q5

5. Which one of the following bar graphs could represent the data from the circle graph?



7 / 8

2015 Q5

5. Billy's basketball team scored the following points over the course of the first 11 games of the season:

42, 47, 53, 53, 58, 58, 58, 61, 64, 65, 73.

If his team scores 40 in the 12th game, which of the following statistics will show an increase?

- (A) range (B) median (C) mean (D) mode (E) mid-range



8 / 8

2013 Q5

5. Hammie is in the 6th grade and weighs 106 pounds. His quadruplet sisters are tiny babies and weigh 5, 5, 6, and 8 pounds. Which is greater, the average (mean) weight of these five children or the median weight, and by how many pounds?

- (A) median, by 60 (B) median, by 20 (C) average, by 5
(D) average, by 15 (E) average, by 20